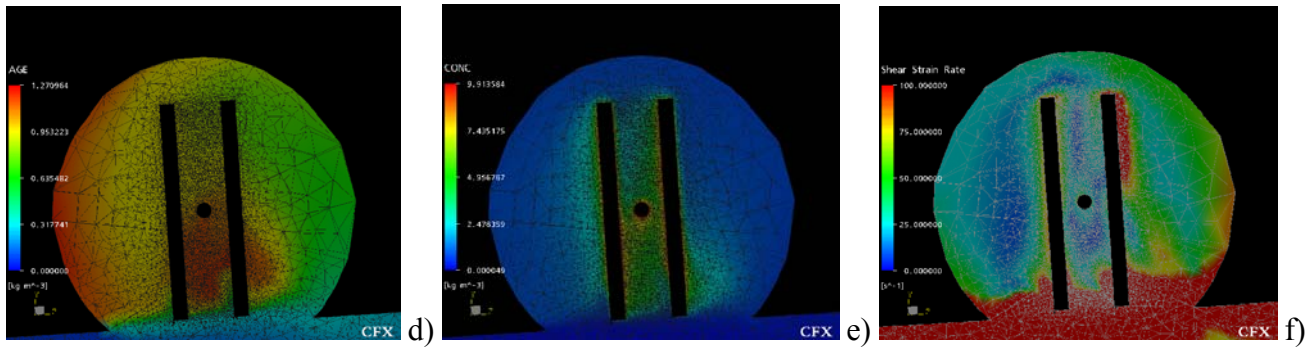
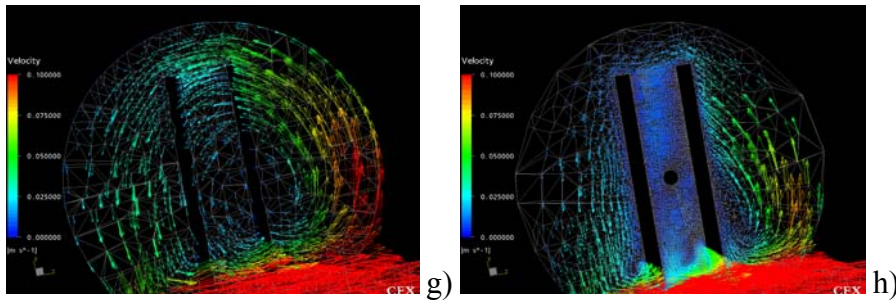


Fluid results using a coarse mesh: a) AGE variable b) CONC variable c) Fluid shear rate



Fluid results using a fine mesh: d) AGE variable e) CONC variable f) Fluid shear rate



Velocity vectors: g) with a coarse mesh h) with a fine mesh

Figure 4 Variation of fluid parameters within the aneurysm model geometry at a solution time of 2 seconds

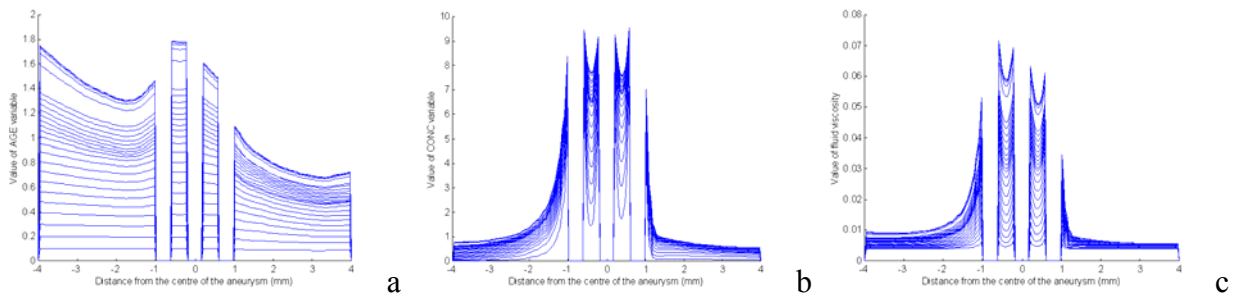


Figure 5 Variation of variables at the centre of the aneurysm a) AGE variable b) CONC variable c) Fluid viscosity